

8 IN 1 Hydra Facial Care Machine (an instruction manual)



Content

USER MANUAL MULTI FUNCTION SPA SKIN SYSTEM...3

A.Instrument display..... 4-6

B.Instrument operation.....6-7

C. Operate Interface Instruction.....7-8

1.Cool and warm hammer head.....9-11

2.RF lifting head.....12-13

3.Facial ultrasound head.....14-15

4.shovel knife.....16-18

5.RF lifting head.....18-20

6.Miro Bubble cleaner head.....21-24

7.Water oxygen head.....26-29

8.Health care brush.....26-29

D. Scope of action.....29-30

E. Operational advice.....30

F. Precautions.....31

G. Product service and repair.....31-32

USER MANUAL MULTI FUNCTION SPA SKIN SYSTEM

IMPORTANT: before starting the equipment correctly, please follow the installation instructions. Any damages caused by incorrect operations will void the warranty.

SAFETY INFORMATION

Thank you for choosing our products! This user instruction is specially designed for the safety of you and others. Please read the instructions carefully before installing or using the machine and follow them when using.

1.1 Electrical Safety

- Before installing the machine, make use that your local electric network complies with the voltage and frequency indicated on the tag on the rear panel. Otherwise, the machine may be damaged in case of excessive current or voltage rise.
- Never touch the machine with damp or wet hands or feet.
- It is dangerous to change or try to modify the function of this machine in any way.
- Do not attempt to operate this unit if the power cord has been frayed or broken
- Do not spill water or other liquids into or on to your unit.
- During long periods of non-use, disconnect the unit's main power.
-

1.2 Safety Rules When Installing

- Place the machine on a stable and secure base. It should not be subjected to any jolts or vibrations.
- Never expose the unit to too high (>40°C) nor too low temperature (<5°C).
- NEVER EXPOSE THE UNIT TO RAIN OR ANY OTHER HUMIDITY.
- Do not expose the unit to direct sunshine or install the unit close to a source of heat (central heating, radiator...); otherwise the screen may be damaged.
- Do not cover or block the ventilator behind the unit.
-

1.3 Safety Rules When in Use.

- Well clean areas to treat before treatment.
- Never touch the machine with damp or wet hands or feet.

A. Instrument display



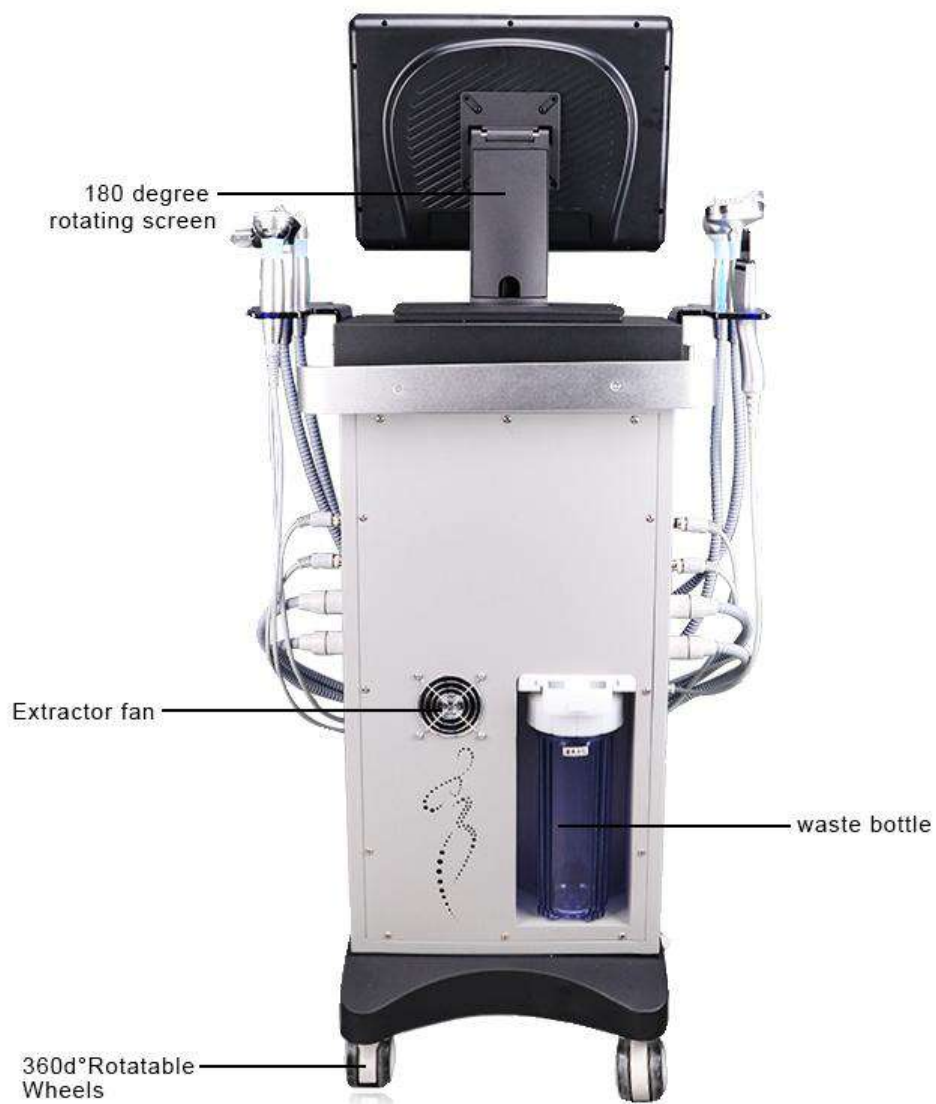
Positive



S1,S2,S3 bottle addable product solution(Such us:cleans skin solution, soothes water, acne skin water and pure water etc)

S4 bottle :As a bottle to clean the mico bubble cleaner head, just add pure water.

Back





Note:

Waste water bottle, full of water must be dumped, otherwise it will damage the instrument

Product parameters

Brand : FQ039

Language: 3 (Chinese, English,)

Screen: 15.6 inch touch screen

Work time: 1-60 minutes

Intensity: 1-10

Mode: A B C D

Clean water bottle: 4

Dirty water bottle: 1

Package size: 130*45*45cm

Voltage: 110/220V, 50/60Hz

Function: Miro bubble cleaner , skin scrubber , water oxygen, beauty line for facial lifting and neck scraping , ultrasound for face , eyes ultrasound, eye RF, freeze fix , ice treatment allergy , enhance immunity , skin tighten etc. (8 functions)



B. Instrument operation

1. Install the Mico bubble cleaner head, skin scrubber head, water oxygen head, beauty headd, facial ultrasound head, eyes ultrasound head, eyes RF head and freeze head accessory on the main unit, place each accessory and connect it to the host.

(1) Insert into the instrument main unit as indicated.

(2) Insert the liquid bottle inlet into the intermediate socket.

(3) Insert the waste water inlet into the back socket.

(4) Insert the power cord into the outlet and it is ready.

2. Put the applicable liquid into the liquid bottle

3. Select the negative pressure small bubble head, then put it on the bubble cleaning pen.



TOTAL HAVE 12 PCS BUBBLE HEAD

4. Turn on the main power switch.

C. Operate Interface Instruction

Treatment screen interface

Make sure the power line has been installed correctly; make sure the hand piece is well connected with the equipment; Ensure the circuit breaker (if any) at the back of the machine is pressed to “on” .Choose the Language. Choose the right parameter to do the treatment according to the needs of customer.

Turn on the machine and you can see the welcome screen and main .

Opening interface with one Languages Figure.1





New technology slidable LCD screen, Touch “Enter”

1. **Cool and warm hammer head**

The ice treatment allergy, enhance immunity, skin tightening, shrinks pores, tightens skin, removes wrinkles, promotes collagen hyperplasia, eliminates redness and sensitivity. Accelerate product absorption.



are interlaced, the face is divided into several lines, and the one line is repeatedly heated and then the next one, so the effect will be better.

Cold: The product uses gel as the medium. If the mask is left after the mask is applied, it is not necessary to apply another gel. There is a sequence of ringing and sedation, and the pores are thicker. The probe can stay for about 5 seconds, and the effect is better. .

Precautions:

The hot hammer will have a thermal sensation during operation. Therefore, the beautician should ask if the customer can accept the operation. The higher the energy in the acceptable range, the better the effect.

The heat hammer will produce a thermal sensation during operation, so it needs to keep sliding after touching the skin, can not stay, once the thermal sensation will be heated to the customer's skin.

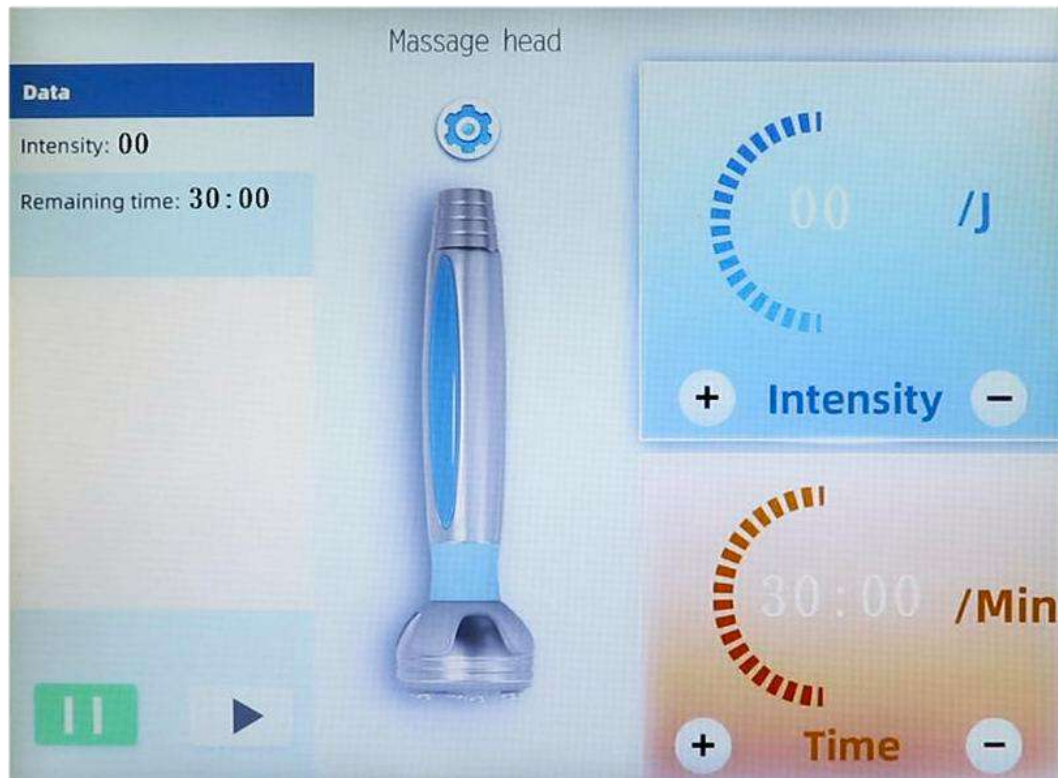
6).In facial management, icy skin is usually used as a last step.

After that, apply a hydrating mask.End process.



2. RF lifting head





02. Operation steps for RF lifting head

Principle:

The mechanical action of ultrasonic waves can promote the emulsification of liquid and the liquefaction of gel, so that the skin care products can be absorbed into the skin to absorb the metabolism, which can promote the metabolism of the skin, thereby accelerating the cell activation function and making the skin look more tender, shiny and elastic. It absorbs nutrients and fights aging and dark circles.

Efficacy: Accelerating the essence absorbing. Promotes the eyes skin metabolism. Improves dark circle and wrinkle.

Product mix: eye essence, stock solution, etc.

2) .Interface adjustment

Intensity : recommend 2 to 4

Time: recomend 5-10 minutes

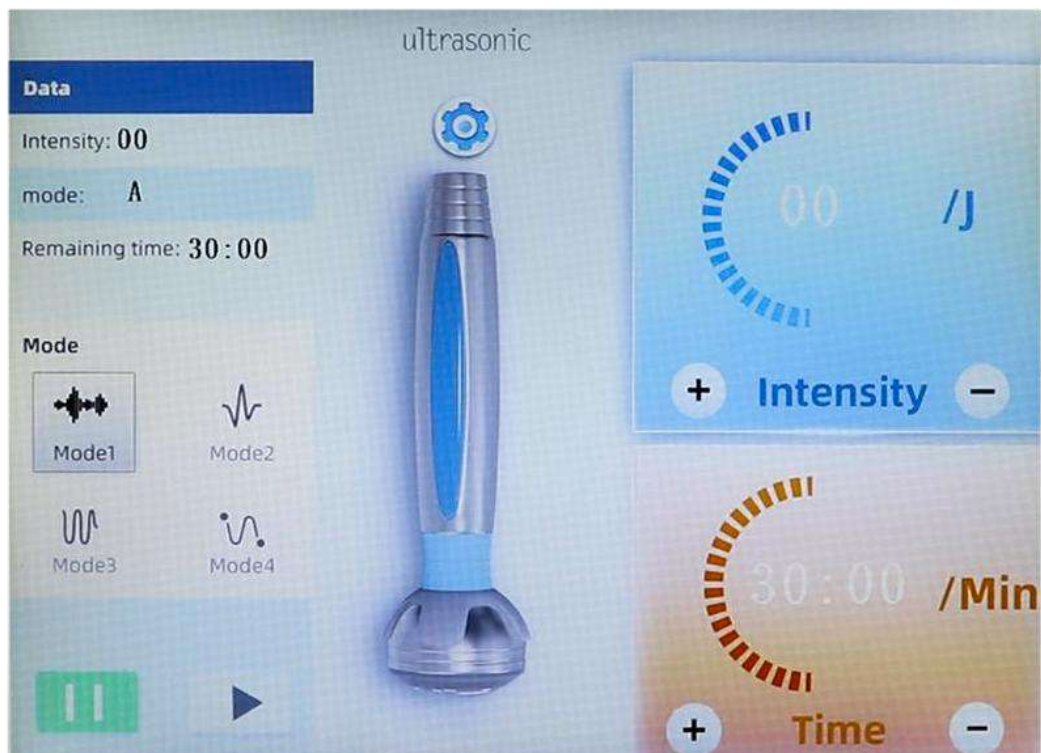
Mode: recomend A

3) .Press the **start** button

4).Method of operation: The probe is in close contact with the eye, from the inside to the outside, from the lower eyelid to the end of the eye, and is operated by sliding or circular motion. The 2 cm range should be operated.

5)Note: The upper eyelid does not operate, and the probe is attached to the eye.

3.Facial ultrasound head



03.Operation steps for facial ultrasound head

1) **.Principle:**The mechanical action of ultrasonic waves can promote the emulsification of liquid and the liquefaction of gel, so that the skin care products can be absorbed into the skin to absorb the metabolism, which can promote the metabolism of the skin, thereby accelerating the cell activation function and making the skin look more tender, shiny and elastic. It absorbs nutrients and fights aging.

Effect:Accelerates the essence nutrition absorbing, promotes the skin metabolism, Promotes cell activation; improves spotted wrinkles.

Product matching: facial essence, stock solution, texture is introduced, the effect will be better

2).Intensity : recommend 2 to 4 (Adjustment within the range that customers can afford)

3).Time :5-10 minutes . Mode: recomend A

4).Press the **start** button

5).When operating, the handle should be close to the customer's facial skin, along the contour of the face, slowly pull the facial skin in a circular motion.

6).**Note:**

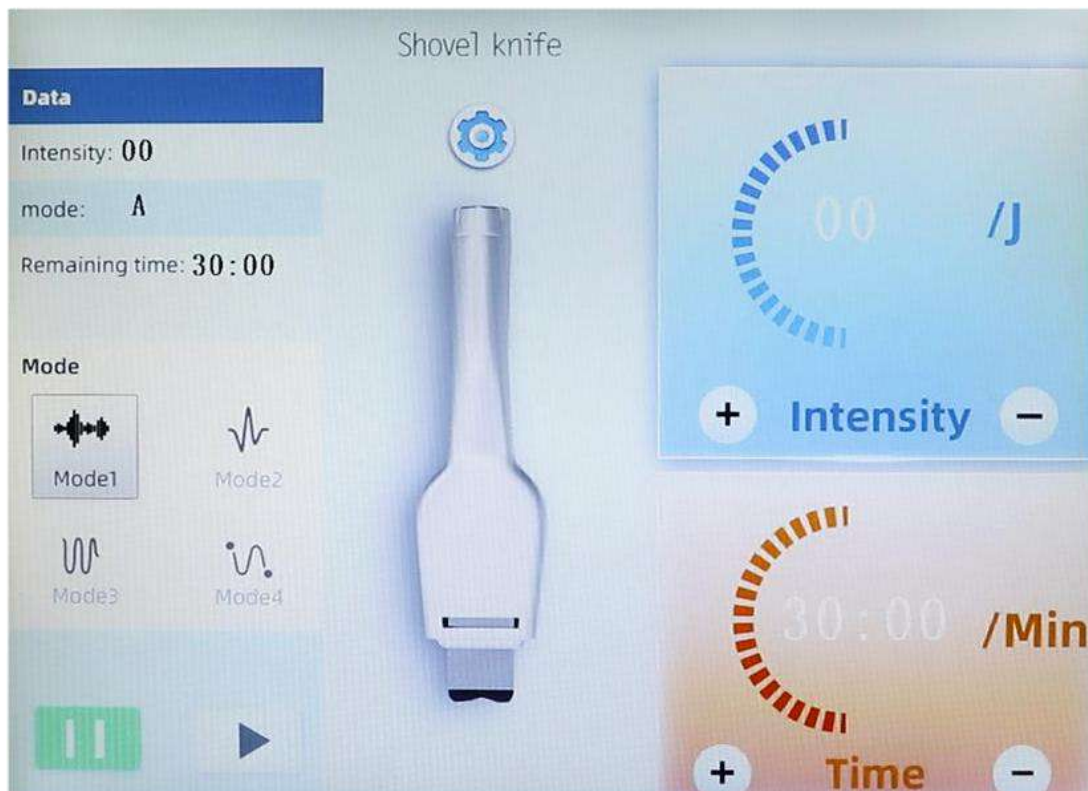
A. Parallel to the skin

B.Keep the medium moist

C. The operation can not be too fast

3.shovel knife

4. Deep clean pores,remove blackheads facial cleansing .



04,shovel knife step operation

Principle:

Use ultrasonic vibration to remove keratinous waste, facial waste; remove toxic substances and bacteria from the epidermis, make up residual dust, and achieve deep cleansing effect.

Product matching: Thermal spray machine, blackhead extract, original cell extract, aloe vera gel, etc.

2).Intensity : recommend 2 to 4

3).Time :10 minutes

4)Mode A(Clean) Mode B(Import) Mode C(Lift)

4).Press the **start** button

5).Method of operation

Mode A (Clean) 10 minutes	The side of the face hot spray and the side of the blackhead extract liquid for 5-8 minutes at the same time, the shovel is tilted at a 45-degree angle to remove the skin dead skin forward, the beautician holds the wet cotton sheet with one hand and wipes the face, keeping the face Wet, the other hand side shovel, generally repeat the same part no more than 3 times, otherwise it will turn red, do not stay in the same place when operating, do not move, otherwise heat will burn to the guests
Mode B (Import) 5 minutes	The face is coated with water emulsion, gel or essence that can be introduced. The shovel is tilted at a 45-degree angle to pull up and press the skin, repeating the operation to achieve the effect of introduction.
Mode C (Lift) 5 minutes	Apply a gel to the face, apply wet gauze to the skin, and shovel the skin at a 45-degree angle.

6)Precautions:

A.Deep cleansing is only suitable for the skin with thicker sebum secretion. If the skin is thin, it will not have much effect, which will affect the skin.

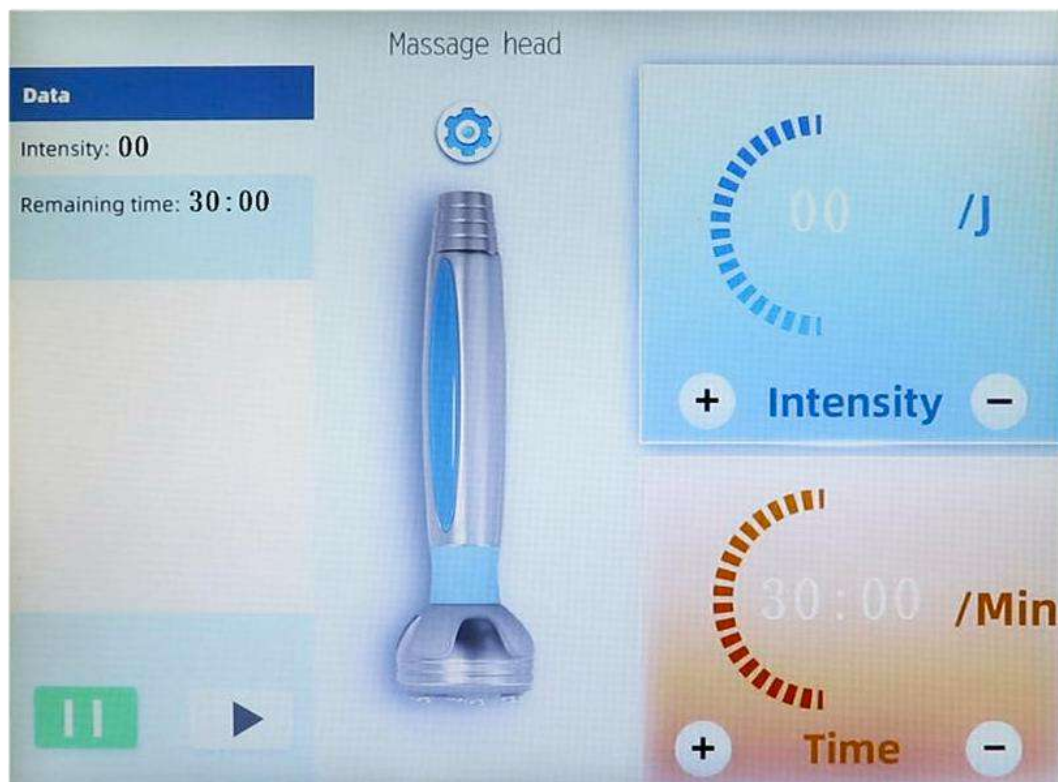
B. It is recommended to be more than once a week.

C. Skin sensitive or allergic people do not operate.

D. Severe acne skin does not operate.

E. After the completion of salicylic acid, fruit acid rejuvenation for more than one month.

5. RF lifting head



05.Operation steps for RF lifting head

principle: Using the principle of thermal stimulation generated by radio frequency, the dermis layer collagen is denatured and recombined, and the treatment of eye-tail lines, fine lines, dry lines, edema of the eyes, and bags under the eyes are achieved.

Efficacy: Activate collagen cells to firm skin, deep wrinkle, modify facial

contours, increase skin elasticity and luster, whitening and rejuvenating wrinkles.

Product mix: eye essence, revitalizing cream, massage cream, etc.

4) .Interface adjustment

Intensity : recommend 2 to 4 Time: recomend 10 minutes

5) .Press the **start** button

4).Method of operation: When operating, the RF lifting head should be close to the customer's skin and be circled according to the facial lines.

The probe is in close contact with the eye, from the inside to the outside, the lower eyelid to the end of the eye sliding method, the 3 cm range should be operated.

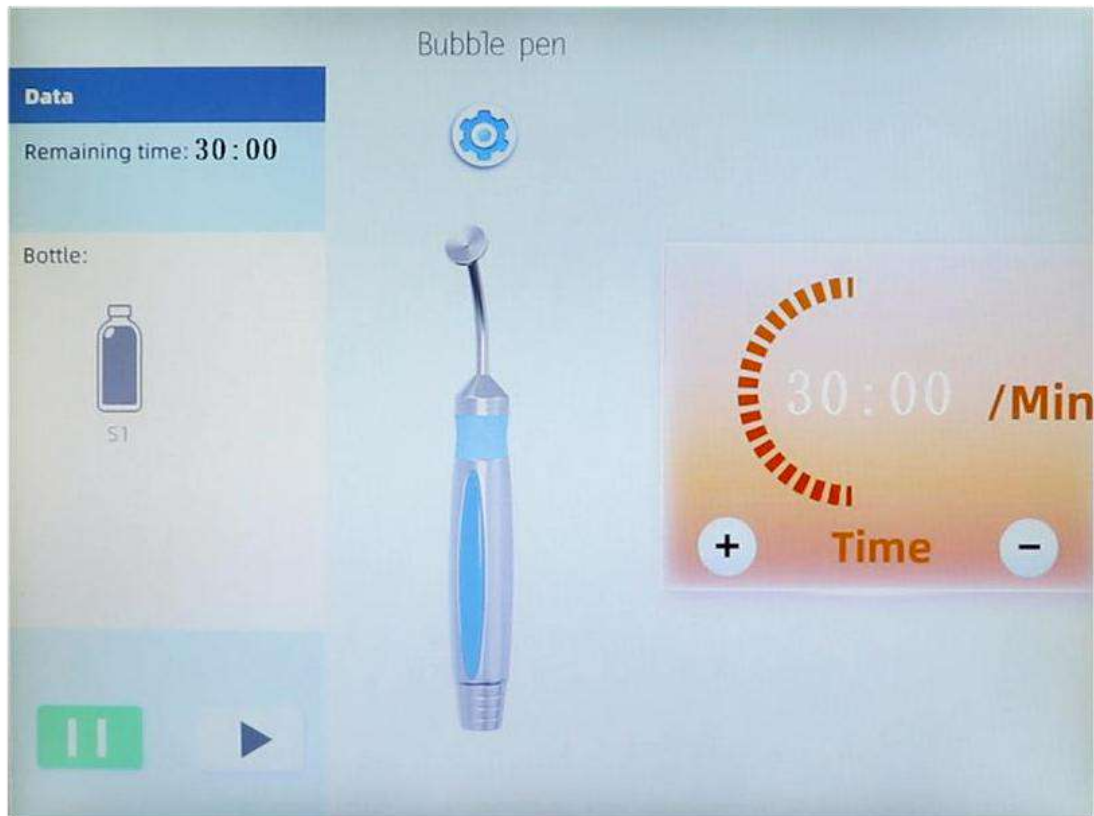
5).**Note:** A.The upper eyelid does not operate

B.Both poles of the probe should be attached to the eye at the same time.

C.due to the operation will produce a sense of heat, so the customer should be able to accept the operation, the higher the acceptable range of energy, the better the effect

D.due to the operation will produce a sense of heat, so after contact with the skin need to keep sliding, can not stay, once the thermal feeling will stay hot to the customer.

6.Miro Bubble cleaner head



06.Operation steps for Miro Bubble cleaner head

1)Principle: Bubble skin management instrument uses vacuum negative pressure technology to combine specific solutions, with low stimulation and dermabrasion. Under the condition of safe and no pain, deep cleansing thoroughly removes all kinds of impurities, aphids and grease residues in the funnel of the hair follicle, and makes hair follicles The funnel is full of nutrients, providing long-lasting nutrition to the skin, leaving the skin moist, delicate and shiny.

2)Effect: Deep clean pores, improve acne, folliculitis, phlegm, deep cleansing of the skin to blackheads, improve skin dullness and hydrate the skin.

3)Product mix: pure water, Skin management solution etc.

4)Interface adjustment:

A.Makeup remover,Cleansing the skin.

B.Time: recomend 10 minutes

C.Pick a suitable bubble head based on your skin,Click on the screen to the original liquid bottle you need to use.

(S1,S2,S3 bottle can hold pure water and facial management solution,S4 as a clean bottle, he only installs pure water.)



D. Adjust negative pressure suction and water flow,Click the start button to give the customer a full face operation.(Both the suction regulator and the hydraulic regulator are on the side of the instrument)

E. Instrument maintenance:

Probe cleaning:Spiral head cleaning: Basic cleaning must be done to prevent bacterial infection. After the screw head is used, the disposable toothbrush can be used to brush out the dirty things in the spiral groove, rinse the dirty things with water, then use alcohol for 3 minutes, and finally put the alcohol. Rinse off the ingredients.

Internal cleaning:After the whole face is cleaned, click on the S4 bottle position, install half a bottle of pure water, and clean the pipe of the bubble head. First adjust the water volume and suction to the maximum,

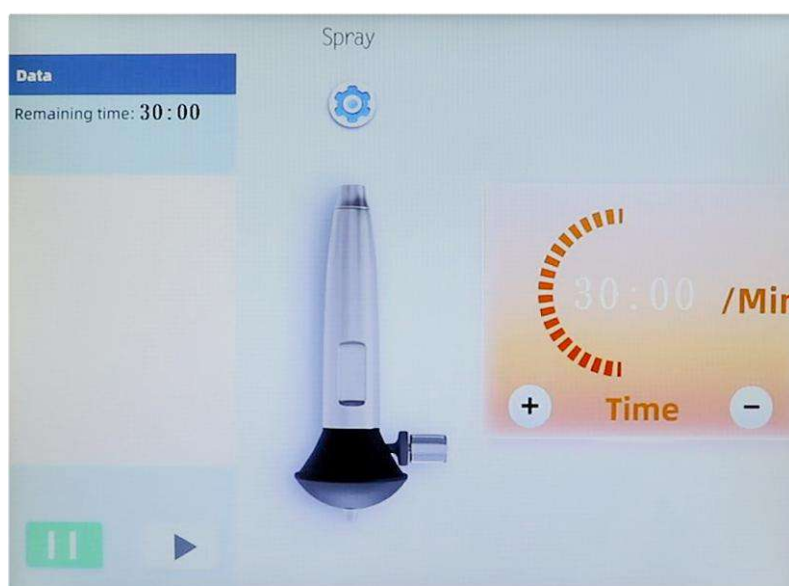
touch the start button, cover the bubble pen with the sealed cover, and the instrument Automatically clean the pipe. Let the water flow back to automatically clean the pipe. Residual solution, about 1 minute.

When the face management solution installed in S1, S2, S3 is used up, The bottle must be removed and washed with warm water. Prevent pipe blockage.

No suction check

- a. Is the inner rubber of the lid of the waste water bottle compact?
- b. Does the black rubber ring that the bubble pen and the screw head interface fall off?
- c. Has the suction adjustment been adjusted to the maximum?
- d. Is there a daily internal cleaning of the machine to avoid blockage?
- e. Insert the transparent tube connecting the solution bottle to the machine.

7. Water oxygen head



08. Operation steps for water oxygen head

1).Principle: The oxygen injection instrument uses oxygen extracted from the air at a concentration of only 21%, and is compressed by a special molecular filter to become an oxygen activity factor with a concentration of more than 95%, and then released under a pressure of 0.2 Pa, and the activity added by a special route is added. The substance is evenly sprayed on the face.

2).Efficacy:

Moisturizing: Moisturizing is the water needed to directly replenish cells in the stratum corneum, so that the water is completely integrated into the skin and the water-deficient cells, thus improving the microcirculation of the skin cells and moisturizing the skin.

Reduces fine lines: As the elastic fibers gradually age, the skin moisture and subcutaneous fat decrease, the skin loses its elasticity and is pulled by the subcutaneous muscles.

Dredge pores: Ensure the effect of moisturizing pores, soften pores and semi-cured sebum, the goal is to clear the tubing of sebum metabolism, keep pores clean

Delaying aging: With the increase of age, the loss of collagen causes the skin to gradually darken and lose its original elasticity and become slack.

3) Product mix: pure water, soothing toner, balanced toner, moisturizing toner. (Note: diluted water)

4) Method of operation:

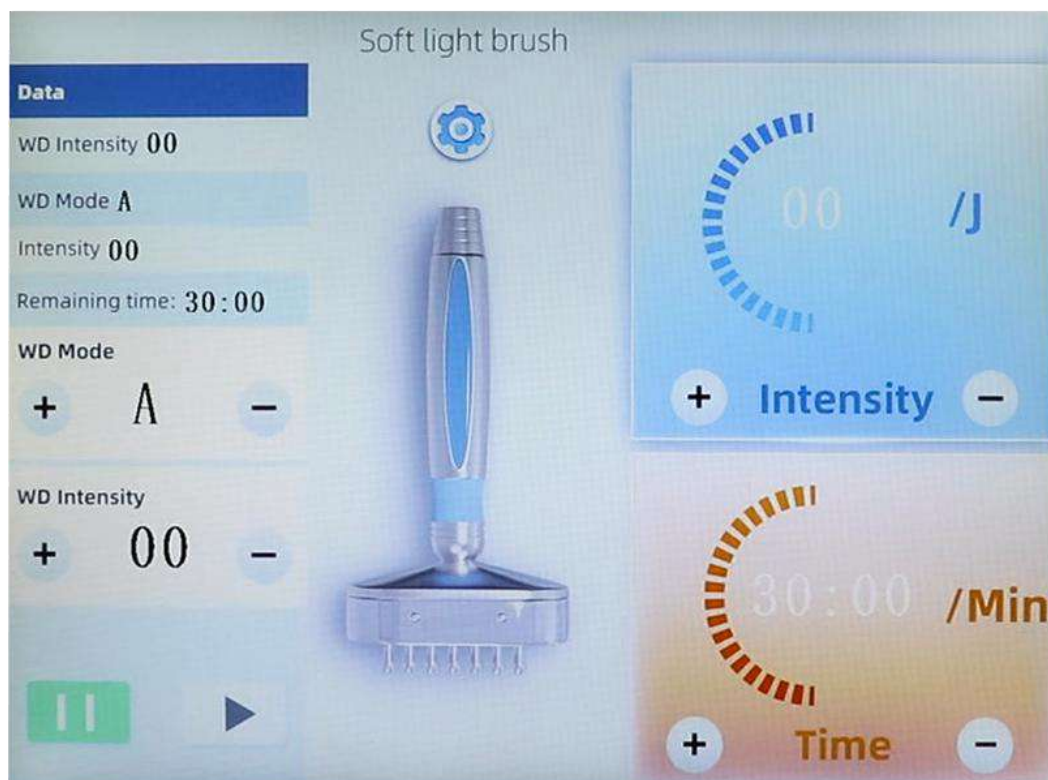
Operate for 5 minutes, put water into the glass bottle, do not add viscous substances, let the customer close the eyes, hand files to the nose and mouth of the guests.

The first method (applicable before, during, after moisturizing): operation

The head is about 10 cm away from the customer's skin. Do not spray water onto the face when spraying, so as not to flow to the neck.

The second method (for direct injection hydration): the operating head is about 1 cm away from the customer's skin, spray water onto the face into a stream of water, and catch it under the towel to avoid flowing to the neck.

8:Health care brush



The main function is to dredge lymph nodes and accelerate the

circulation and metabolism of the head. The energy starts from the lowest, and the neck circulates from top to bottom. The half side can be dredged from the back of the Yintang for 10-15 minutes (the time can be adjusted according to personal conditions). The specific operation time is determined according to the project time set in the stor

5).Precautions:

After the operation, put it into the glass bottle with clean water, and spray it normally. The effect of cleaning the inner tube can be achieved at the same time, otherwise the tube will be blocked for a long time, and no water or oxygen can be sprayed.

D.Scope of action:

1. Acne, seborrheic alopecia, folliculitis, clear skin allergens;
2. Skin whitening, improve skin dullness, dark yellow, improve skin texture;
3. Deeply clean the skin, and at the same time hydrate and nourish the skin;
4. Remove blackheads, improve skin relaxation, tighten pores and increase skin transparency;
5. Preoperative and postoperative care for exfoliative skin reconstruction and non-exfoliating skin reconstruction;

6. The skin is shaped tightly, shrinking pores and improving the double chin.



Before and after comparison for clean blackhead



E.Operational advice

We have sorted out some of the problems we encountered when we worked on the project, and we gave you some suggestions.

1) **Q:** If you don't want to exfoliate, you don't have to exfoliate, and then do other exercises?

A: Yes, but we recommend that you start with exfoliation management.

2) **Q:** Is there a method order for professional use?

A: We recommend cleaning first - oxygen injection - ultrasonic introduction - RF lifting - ice sealing

3) **Q:** Is it not possible to wear jewelry when applying?

A: Yes, it is best not to wear jewelry when applying, because some probes have micro-current introduction. So don't wear jewelry.

4) **Q:** Do you still need to use exfoliation after using the big bubble pore cleaner?

A: After using the large bubble pore cleaner, you don't need to use other instruments to exfoliate, Miro Bubble cleaner and Miro Bubble cleaner head, Choose one.

F. Precautions

1. Confirm that the cables and power supplies of all ports are correct.
2. Turn off the power when not using the instrument
3. Please understand the contents of each item in the manual and use the instrument.
4. Pregnant women are advised to use only on the face
5. Customers with thin skin cuticles or severe red blood cells of the tibia are prohibited from using bubble cleaning.
6. For customers with thin skin cuticles or severe red blood cells of the tibia, it is not advisable to stay in the tibia for too long when operating RF.
7. Severe allergy, severe acne, heart disease, etc., can not use the instrument
8. Do not use irritating skin care products within 24 hours after treatment,

pay attention to sun protection. Apply a moisturizing mask for one week.

G.Product service and repair

1. The machine is guaranteed for one year from the date of purchase (by the bill), and the quality problem is repaired free of charge within one year. If there is a problem after one year, the maintenance fee will be charged. The accessories are warranted for three months, quality problems occur within three months, repairs are free, and parts repair costs are charged after three months. Others who have passed the warranty period may also be responsible for repairs and collect the cost of spare parts and consumables.

2. No warranty service is provided for the following failures caused by personal reasons.

3.Unauthorized disassembly and assembly, modification of the fault caused by this product;

4.Use accidental beatings, failures caused by falling;

5.Failure due to lack of proper maintenance;

6.Failure caused by proper guidance of the instructions for use.

All in one, we will try our best to serve you and also need your fully cooperation. Thanks.

Product name :	Purchase date:	deadline:
Seller:	Add.:	Tel.:

Customer:	Add.:	Tel.:
Repair date	Reason of the fault	Repair content